

The Thirteenth Forest Rogaine

July 31st - August 1st 1993

The 14th Australian Championships

SETTERS
BRYAN HARDY
ANDREW THOMAS

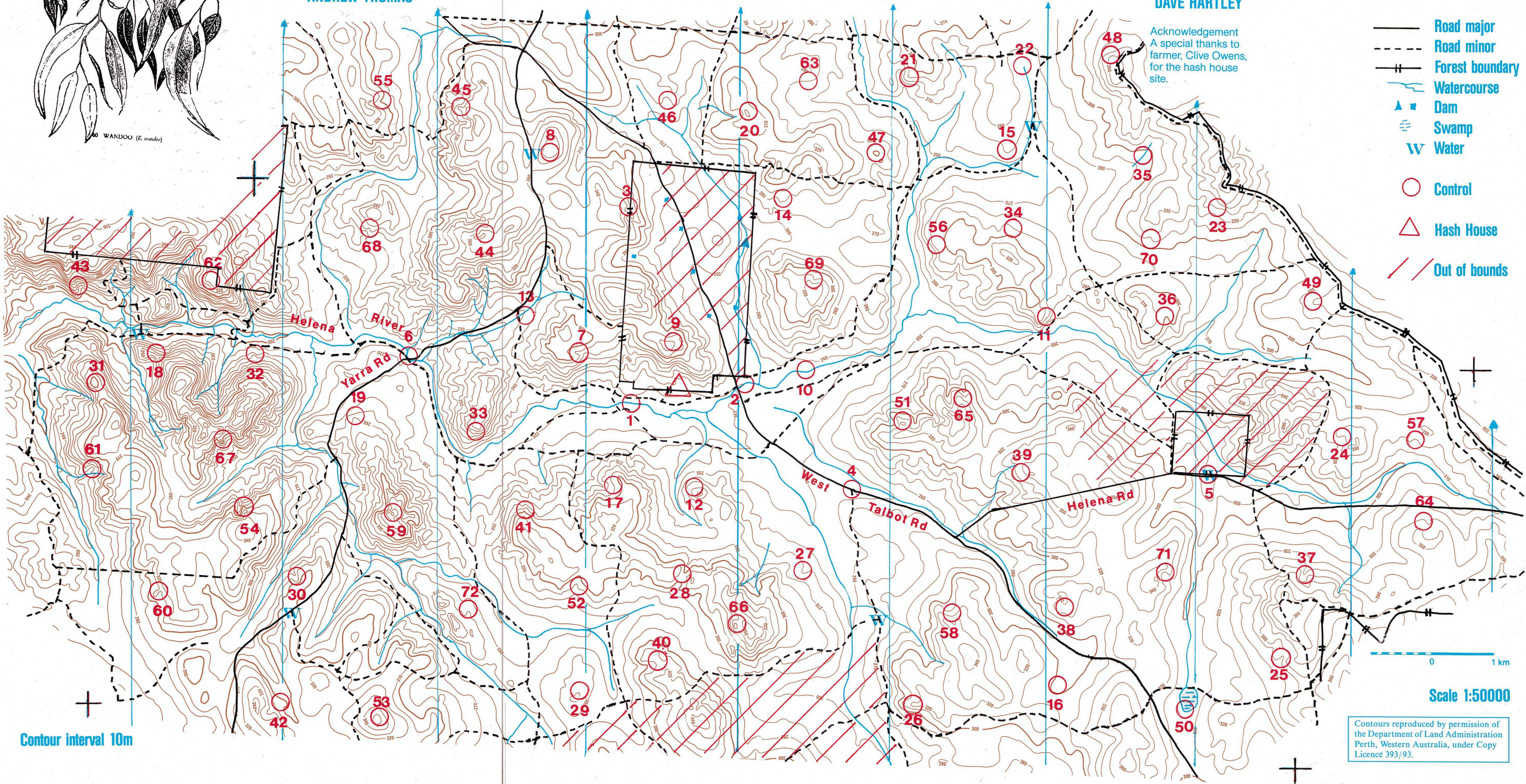
VETTERS
STAN BARCLAY
DAVE HARTLEY



WANDOO (E. wandoo)

Acknowledgement
A special thanks to
farmer, Clive Owens,
for the hash house site.

- Road major
- Road minor
- Forest boundary
- Watercourse
- Dam
- Swamp
- Water
- Control
- Hash House
- Out of bounds



Contour interval 10m

Contours reproduced by permission of
the Department of Land Administration
Perth, Western Australia, under Copy
Licence 393/93.



Control Descriptions - Australian Rogaining Championships

The Thirteenth Forest - July 31st/August 1st 1993

1. A water-hole	South bank	20	37. The gully	At a water-course junction	60
2. The river	On a derelict bridge	20	38. A rock-surface 70/140m	Eastern end	60
3. The small gully	Head of a water-course	20	39. The shoulder	N.W. of a 4m boulder, one of a cluster	60
4. The road/track junction	S.apex of junction triangle then 200m at 235 degrees	20	40. A saddle	Western part by a 3m boulder	60
5. A culvert	Then 150m at 180 degrees	20	41. The small spur	South edge of a rock-surface 20/20m	60
6. A C.A.L.M. gate	Then 160m at 270 degrees	20	42. The spur		60
7. The gully	On a water-course bend	30	43. The spur	At the foot of a prow-shaped 4m cliff	70
8. The summit	Southern part	30	44. The summit	Western edge of the northern part	70
9. The summit	Eastern end	30	45. The spur		70
10. A track/river crossing	Then 30m at 308 degrees	30	46. The gully		70
11. A rock-surface 200/100m	Eastern part. Caution above 8m cliff	30	47. The knoll		70
12. A rock-surface 60/50m	Southern edge	30	48. The summit	Northern end at the foot of a 1m cliff	70
13. A watercourse/track crossing	In an old charcoal wagon	40	49. The spur		70
14. A rock-surface 20/10m	In a clearing 100/40m	40	50. The swamp	Southern edge	70
15. The spur		40	51. The knoll	South edge	70
16. The broad gully		40	52. The gully	Western part of a clearing 150/100m	70
17. The gully	Western base of a rock-surface 140/40m	40	53. The summit		70
18. A saddle	On an old fence-line	40	54. The spur		70
19. The spur	South end of a rocky clearing 80/30m	50	55. The gully	At a water-course junction	80
20. The summit		50	56. A spur		80
21. The spur		50	57. The gully		80
22. The water-course	West side of a marsh	50	58. The gully	At a water-course/old track crossing (Near a Left-Handed Red Gum!)	80
23. A rock-surface 50/20m	Northern edge	50	59. The Summit		80
24. The broad gully	South side of a 2m boulder	50	60. A knoll		80
25. The gully	On a water-course bend	50	61. The Northern gully	At a water-course junction	90
26. A rocky knoll		50	62. A rock-surface 30/20m	N.W. edge	90
27. The shallow gully		50	63. A pine-plantation	North edge	90
28. The saddle	West side of boulders	50	64. The spur	Eastern side	90
29. A low ridge	N.E. end of an area of boulders 200/50m	50	65. The small gully	Head of a water-course	90
30. The gully	At a water-course junction	50	66. The small, rocky knoll		90
31. The knoll		60	67. The knoll		100
32. The small spur	On rocky ground	60	68. The small gully		100
33. A rock-surface 70/30m	S.E.edge	60	69. The gully	On a water-course	100
34. A rock-surface 150/50m	S.E.edge	60	70. The gully	At a water-course junction	100
35. The water-course	Top part of an erosion gully	60	71. The gully	At a water-course junction	100
36. The gully	Upper part	60	72. The shallow gully	On a water-course	100